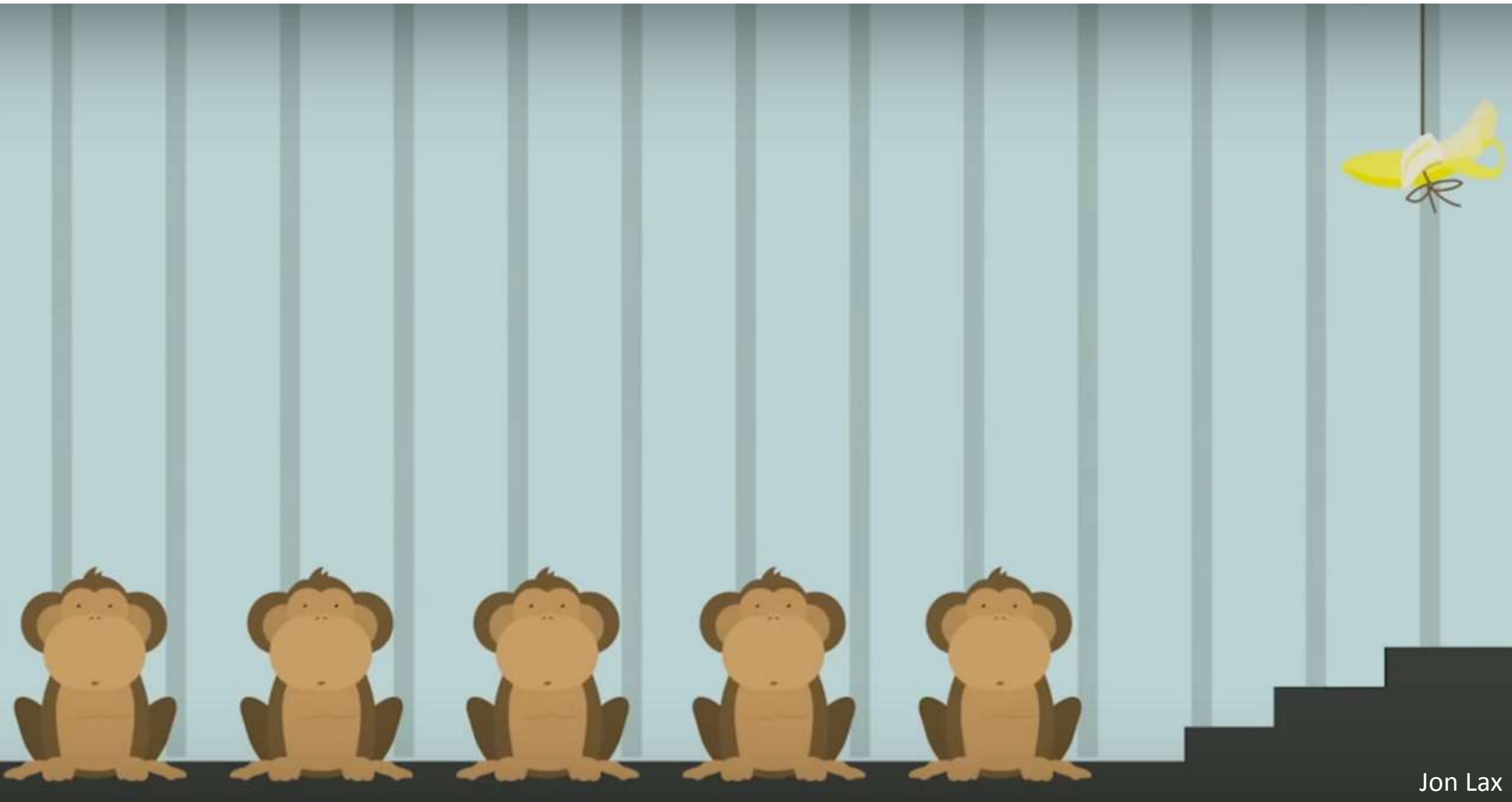
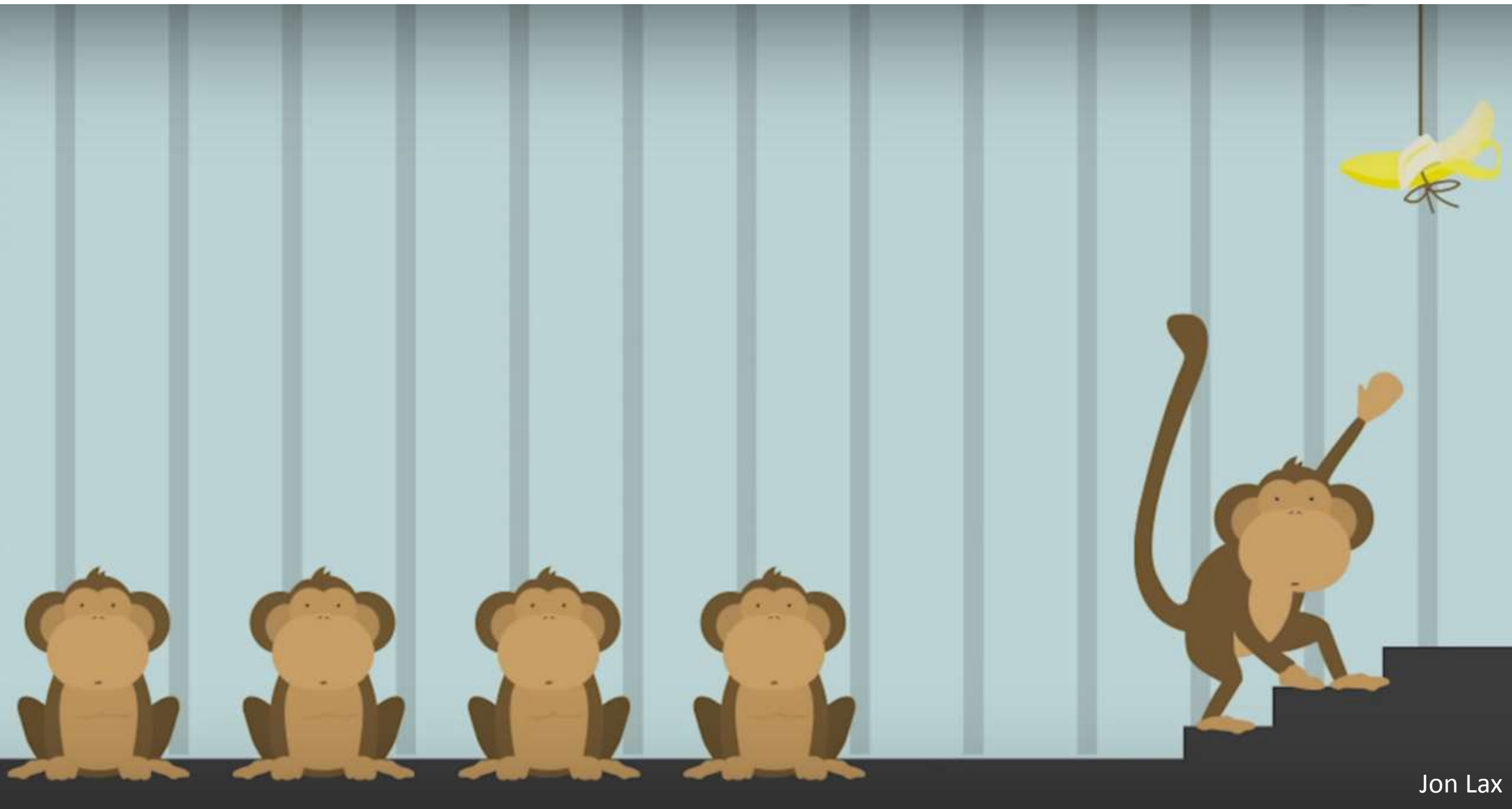


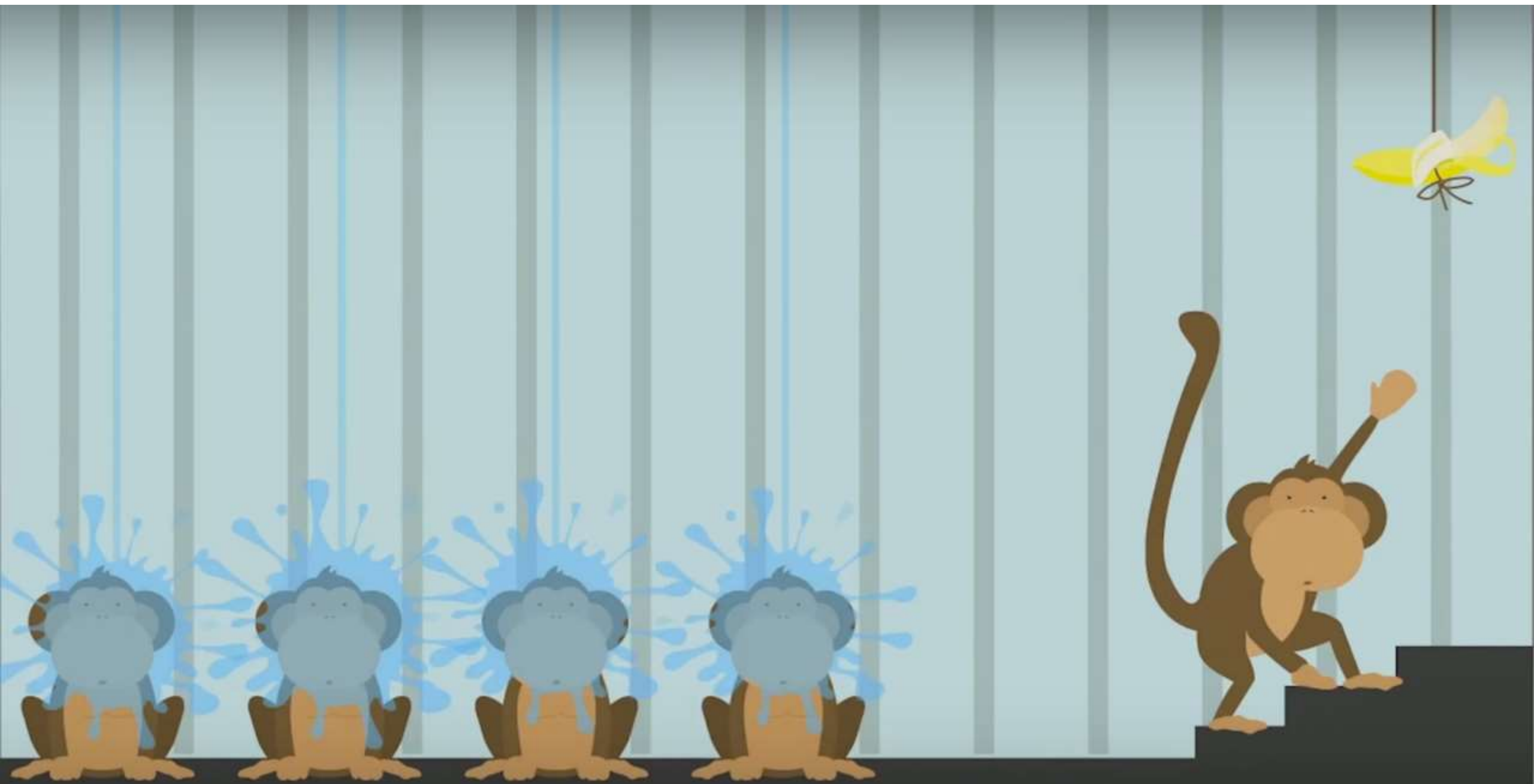
BIM

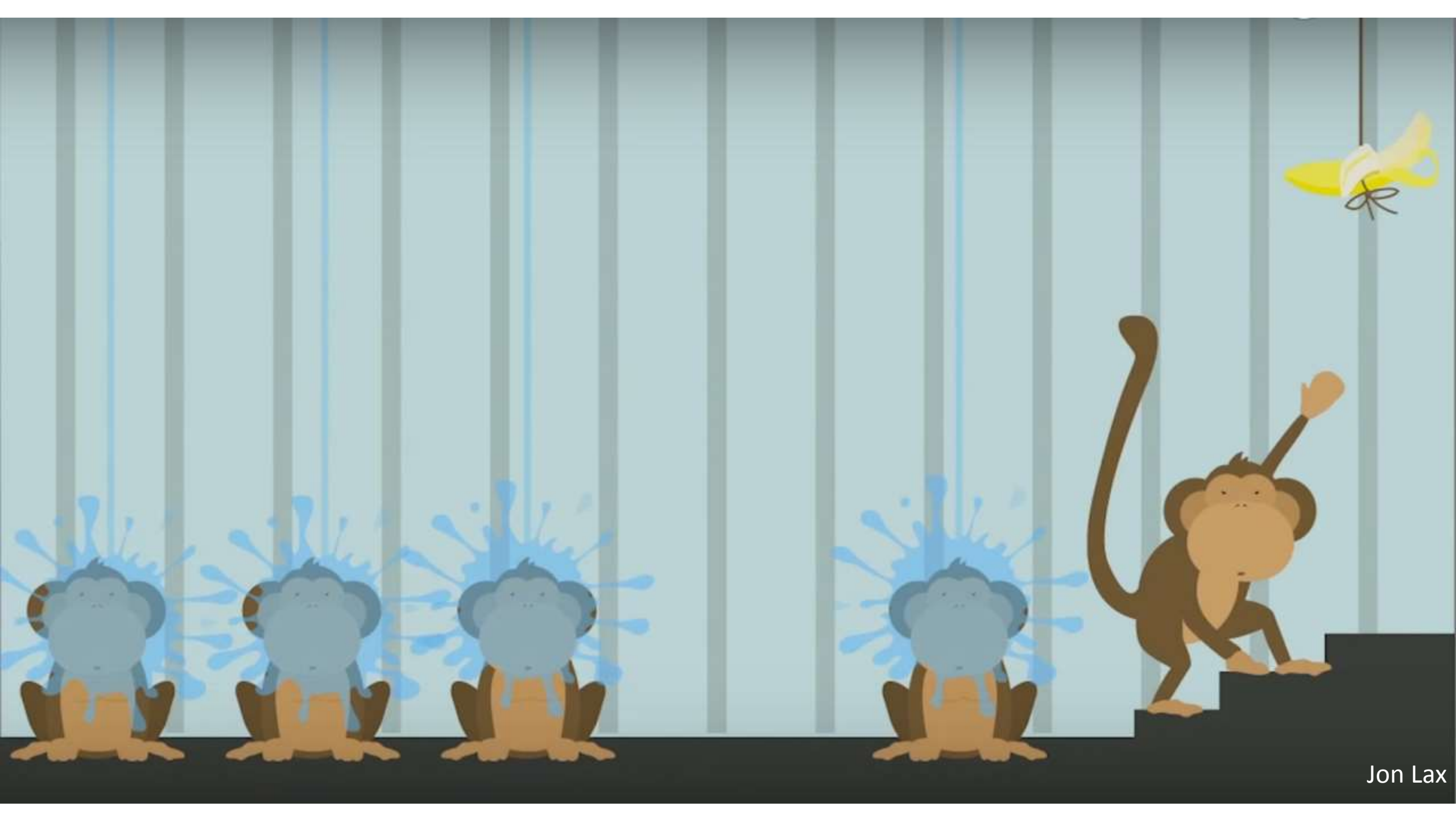
What's Really Happening



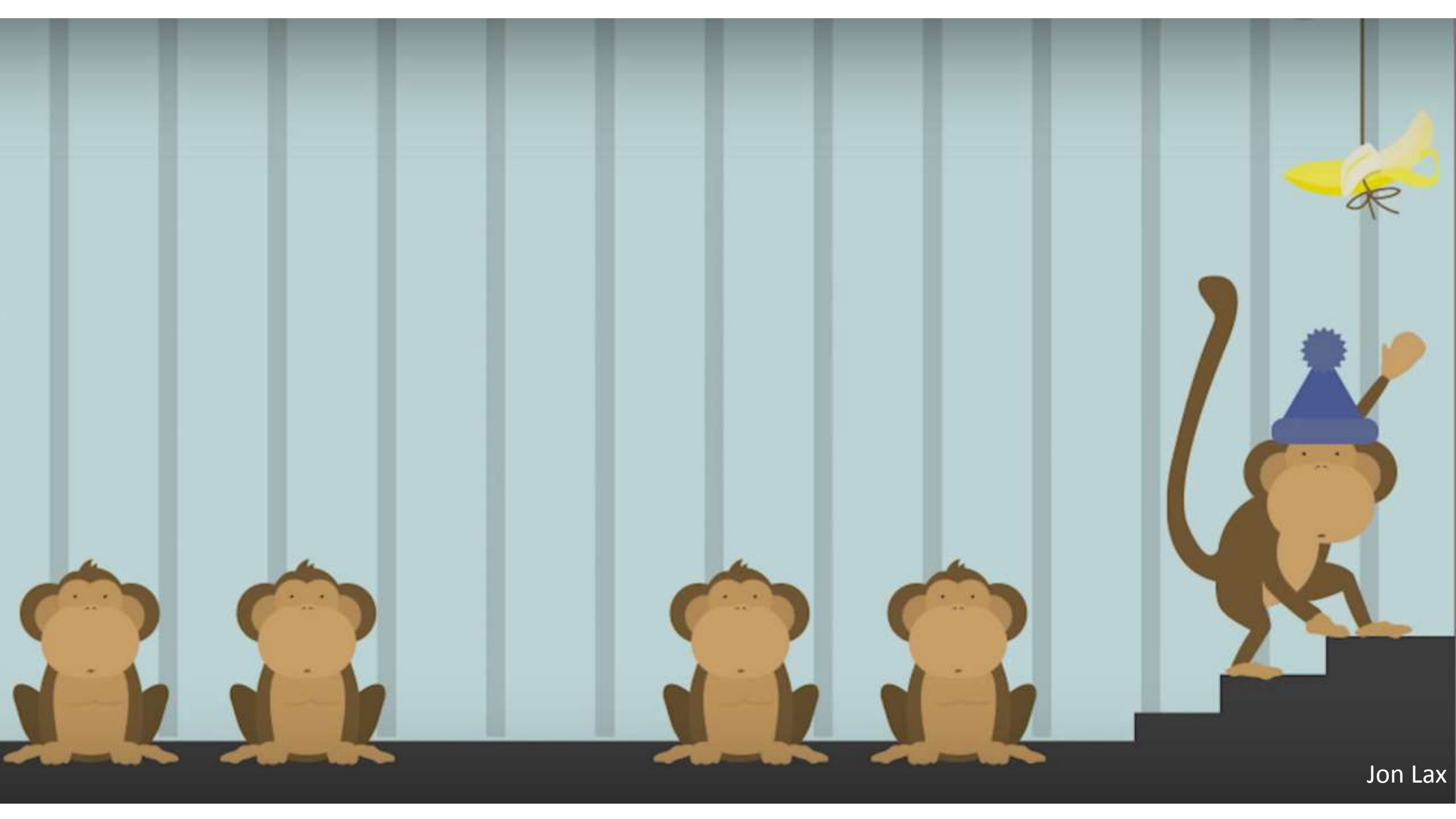










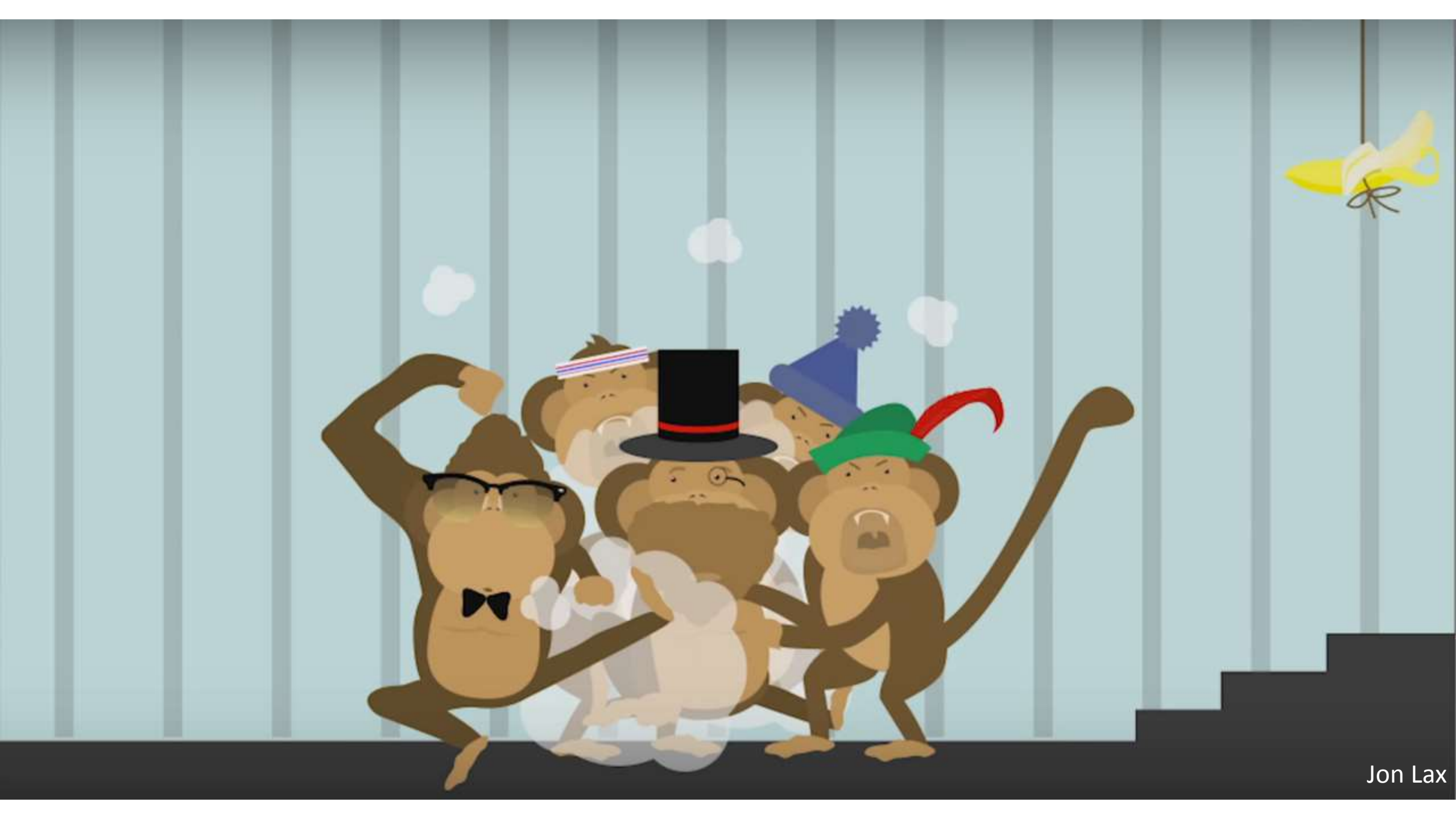












Schnitt G-G

M 1:20

3240

Reinb. 18 x 16 x 206 55

Reinb. 18 x 16 x 206 56

63

67

923

285

Reinb. 16 x 9 x 23 x 45

63

67

923

285

145

1150

205

100

1059

105

105

105

105

105

105

105

105

105

105

105

105

105

105

105

105

105

105

105

105

105

105

105

105

105

105

105

105

105

105

105

105

105

105

105

105

105

105

105

105

105

105

105

105

105

105

105

105

105

105

105

105

105

105

105

105

105

105

105

105

105

105

105

105

105

105

105

105

105

105

105

105

105

105

105

105

105

105

105

105

105

105

105

105

105

105

105

105

105

105

105

105

105

105

105

105

105

105

105

105

105

105

105

105

105

105

105

105

105

105

105

105

105

105

105

105

105

105

105

105

105

105

105

105

105

105

105

105

105

105

105

105

105

105

105

105

105

105

105

105

105

105

105

105

105

105

105

105

105

105

105

105

105

105

105

105

105

105

105

105

105

105

105

105

105

105

105

105

105

105

105

105

105

105

105

105

105

105

105

105

105

105

105

105

105

105

105

105

105

105

105

105

105

105

105

105

105

105

105

105

105

105

105

105

105

105

105

105

105

105

105

105

105

105

105

105

105

105

105

105

105

105

105

105

105

105

105

105

105

105

105

105

105

105

105

105

105

105

105

105

105

105

105

105

105

105

105

105

105

105

105

105

105

105

105

105

105

105

105

105

105

105

105

105

105

105

105

105

105

105

105

105

105

105

105

105

105

105

105

105

105

105

105

105

105

105

105

105

105

105

105

105

105

105

105

105

105

105

105

105

105

105

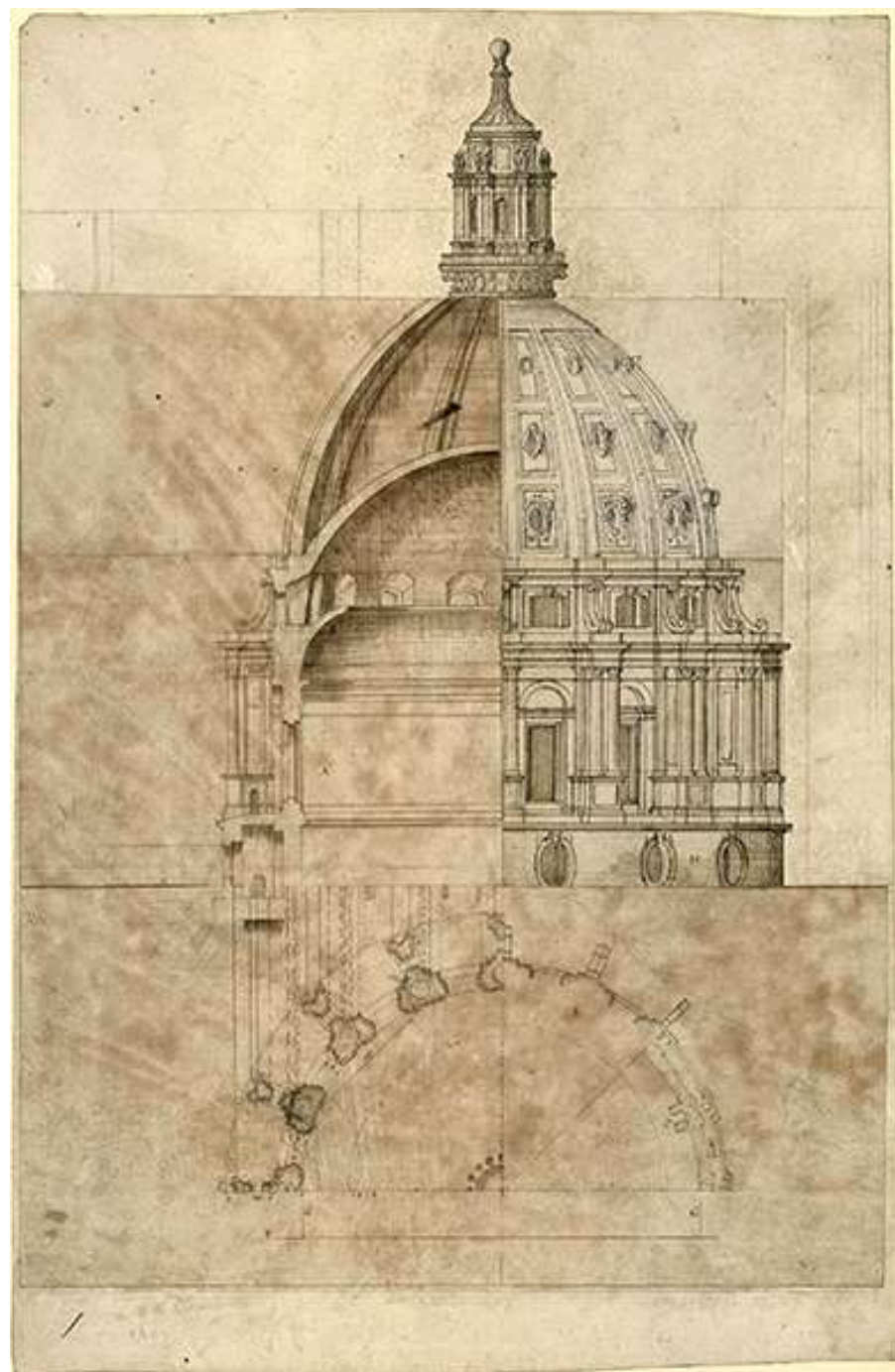
105

105

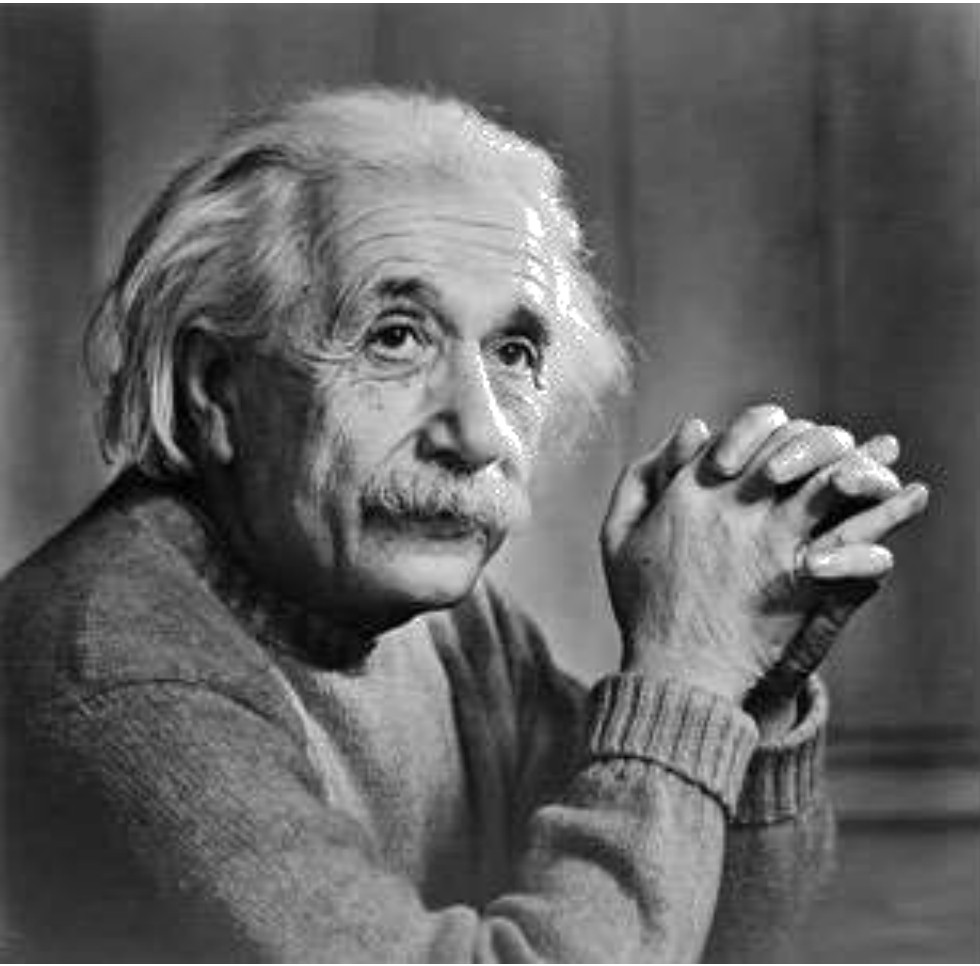
105

105

1



Why do we do the same thing over and over again



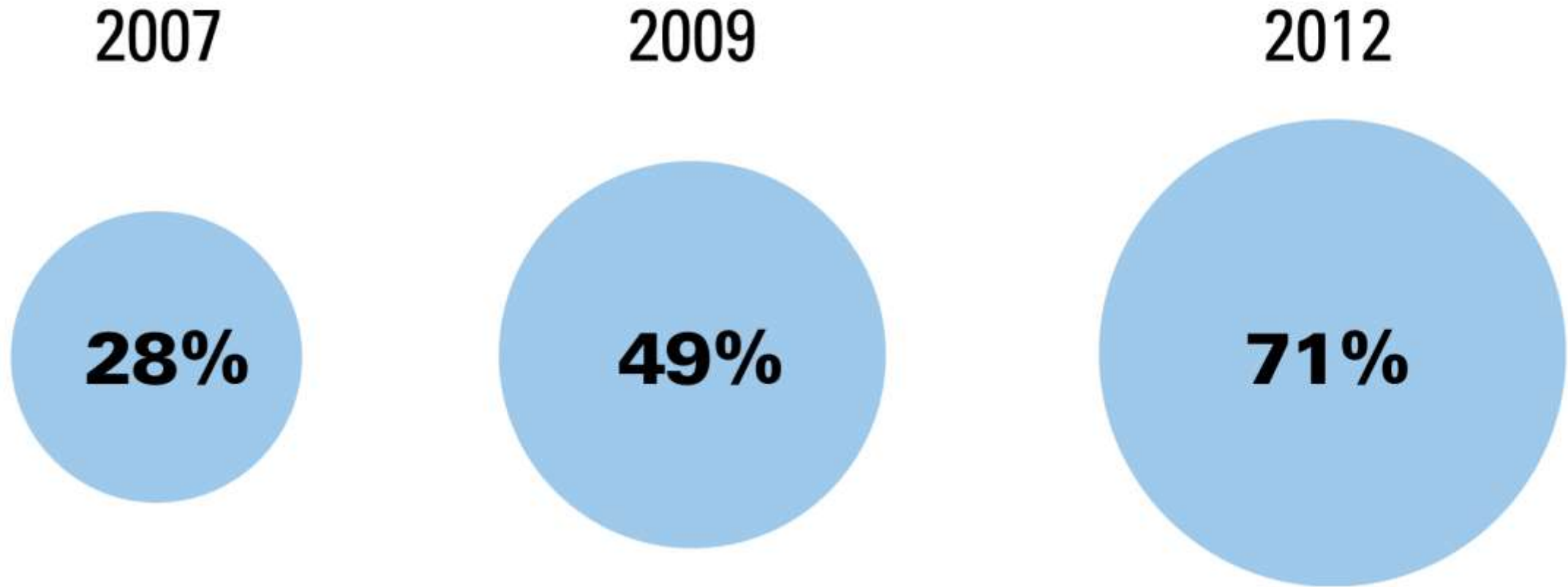
*The definition of insanity is
repeating the same behaviors
and expecting a different outcome.*

Albert Einstein

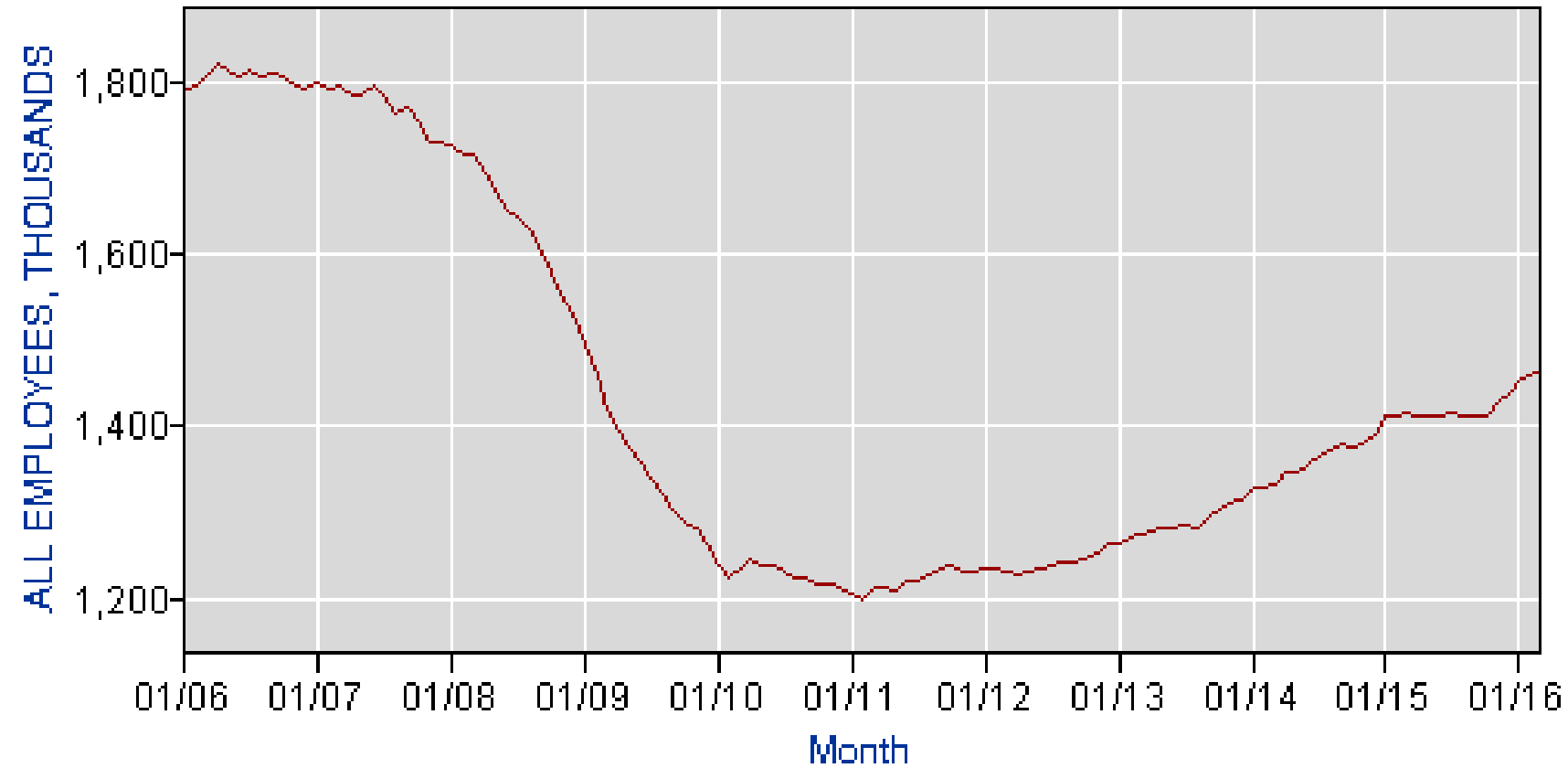
2005

Levels of BIM Adoption in North America

Source: McGraw-Hill Construction, 2012



Building Construction



Roughly 1.5 Million People

2009



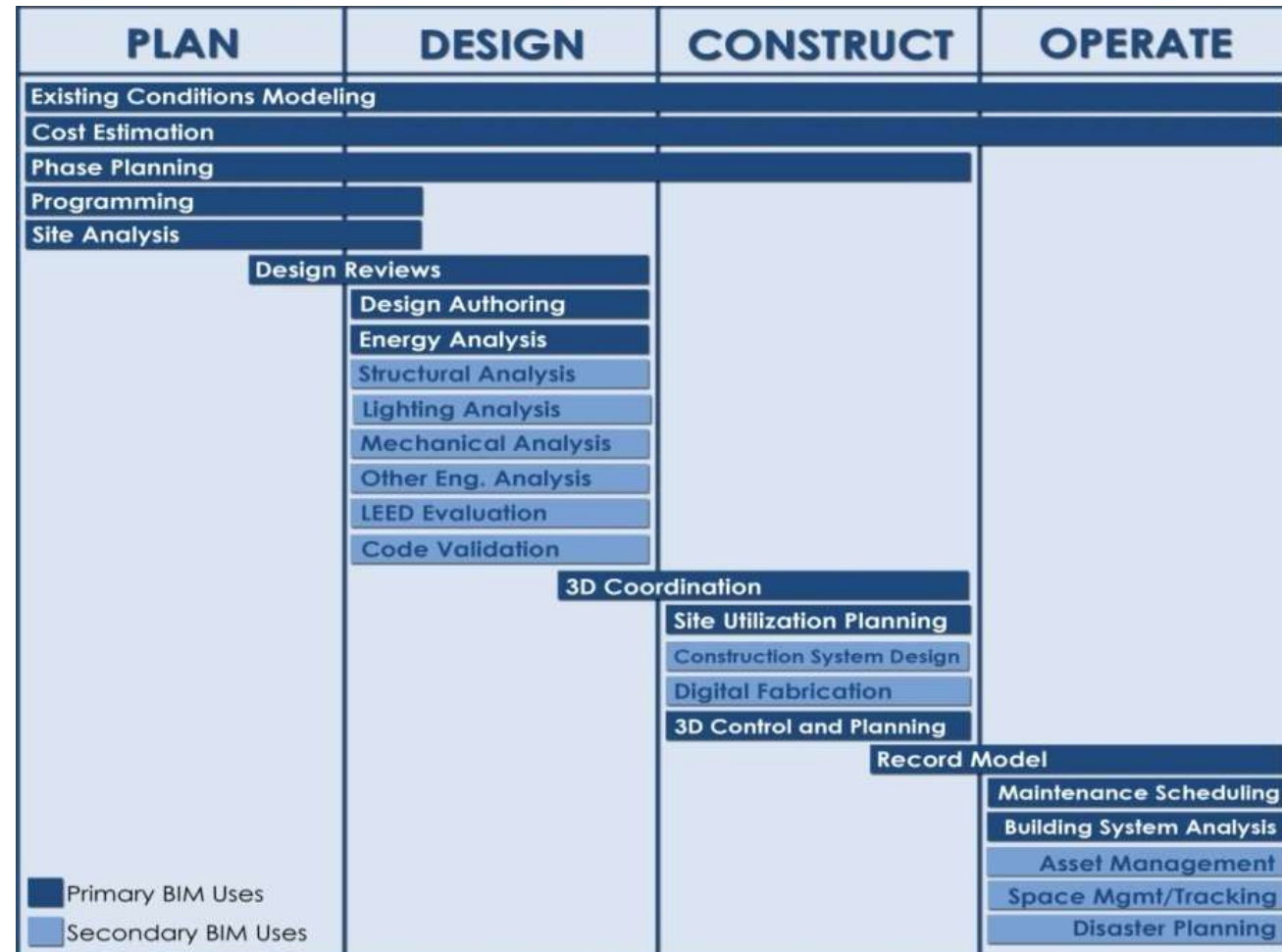
2016

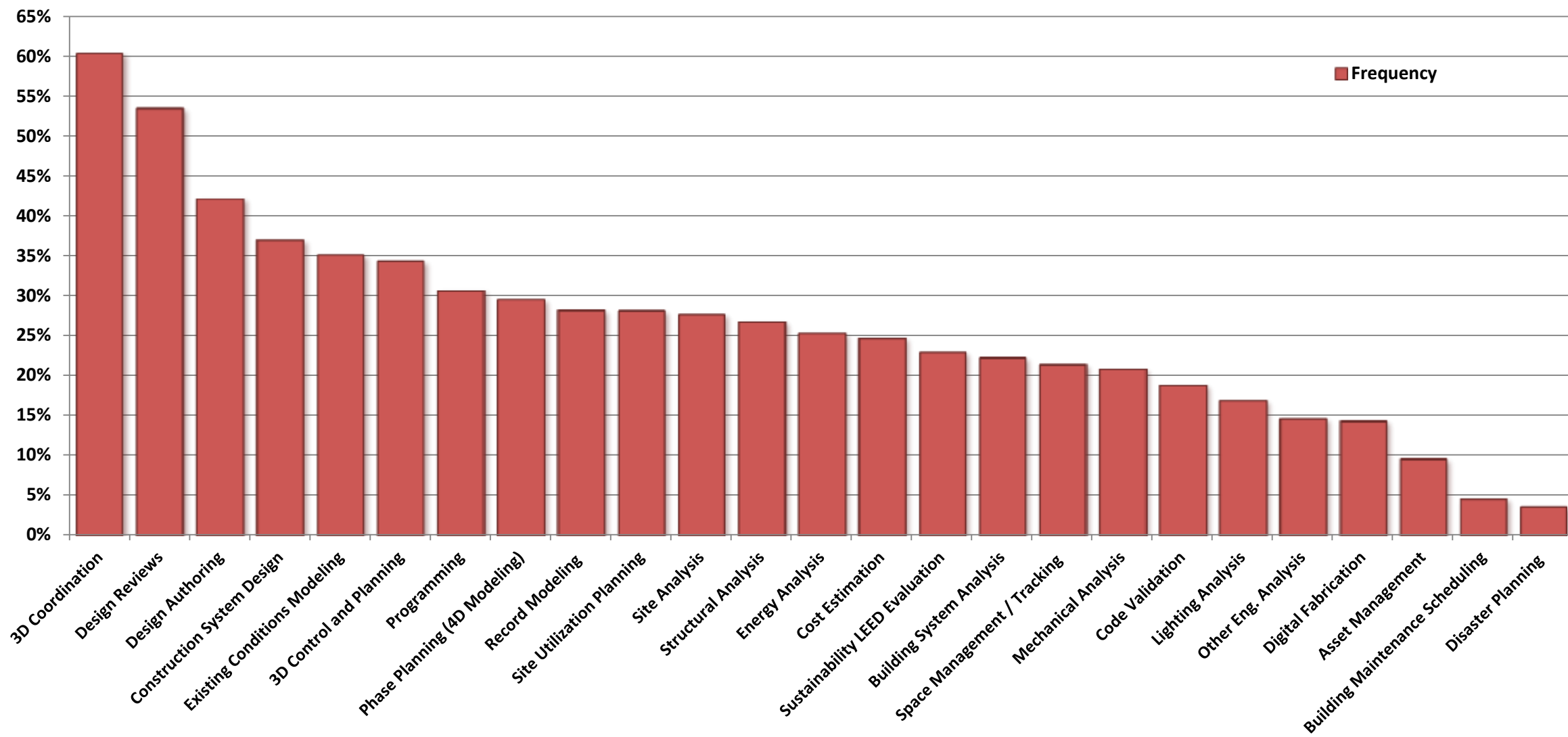
Is it much different today?

2005 – 2016

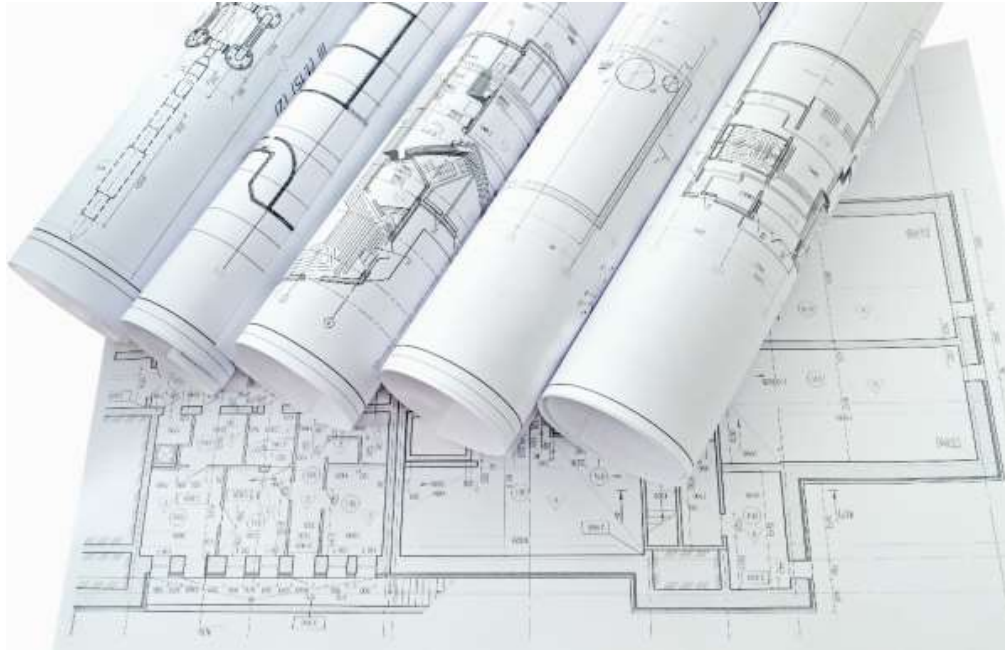


Identified 25 BIM Uses

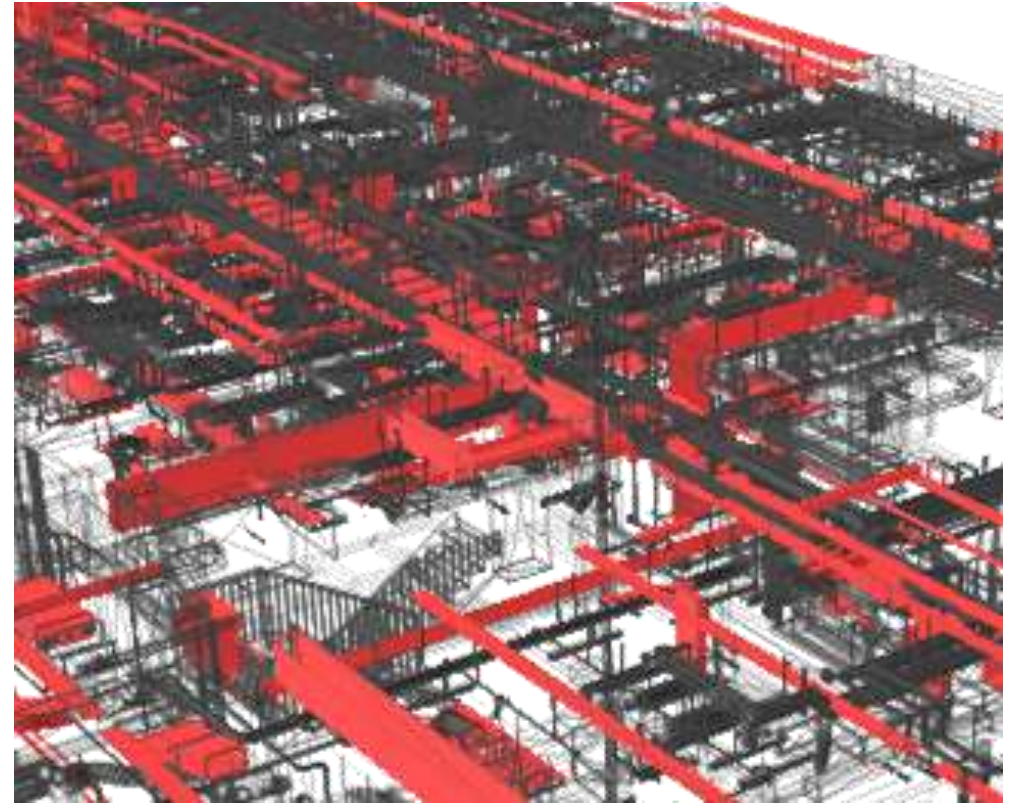




What are we really doing as an industry



Drawing Production



Coordination

BIM Does Not Change the Purpose

Only the means by which that
Purpose is achieved

How are we really using BIM

Gather to collect or organize facility information

Capture

to represent or preserve the current status of the facility and facility elements



Quantify

to represent or measure the amount of a facility element



Monitor

to collect information regarding the performance of facility elements and systems



Qualify

to observe the or identify facility element status



Communicate to present information about a facility in a method in which it can be shared or exchanged

Visualize

to have a realistic representation of a facility or facility elements



Draw

to make a systematic representation of the facility and facility elements



Transform

to modify information and transform it so as to be received by another person or system



Document

to create a record that facility information is used for the management of a facility



Realize to make or control a physical element using facility information

Fabricate

to use facility information to manufacture the elements of a facility



Assemble

to use facility information to bring together the separate elements of a facility



Control

to use facility information to operate the equipment or systems of a facility



Regulate

to use facility information to adjust the operation of a facility element



Generate to create or author information about the facility

Prescribe

to determine the need for and select specific facility elements



Size

to determine the magnitude and scale of facility elements



Arrange

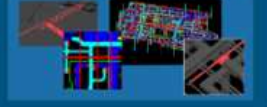
to determine location and placement of facility elements



Analyze to examine elements of the facility to gain a better understanding of it

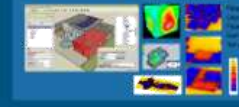
Coordinate

to ensure the efficient and effective use of the resources of a facility



Forecast

to predict the future performance of the facility and facility elements

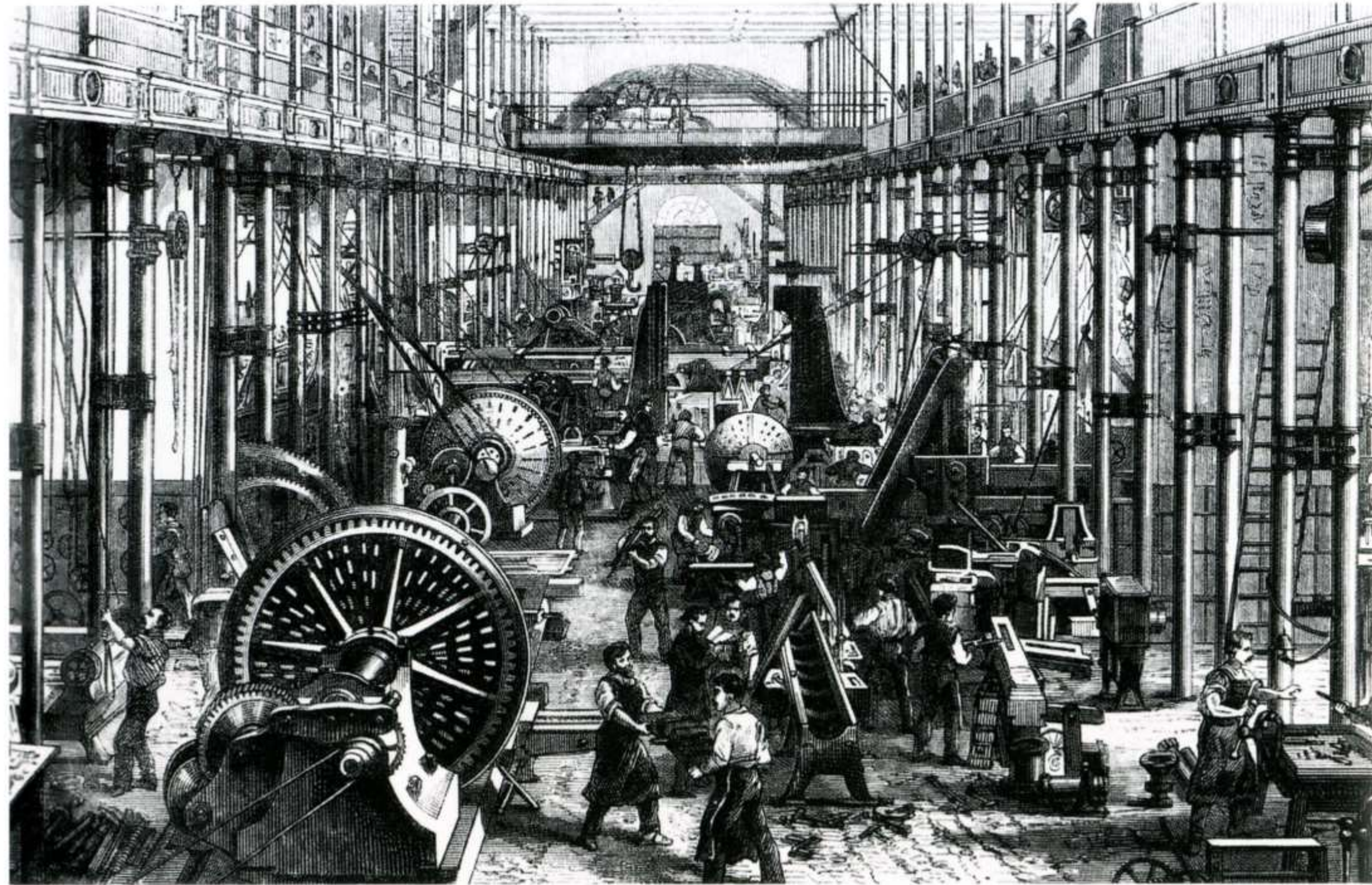


Validate

to check or prove accuracy of facility information and data



How do we make BIM more
accessible?



How did we transition between Analog and Digital?



What habits do we have?

How do we change habits?

- Owners
- Law
- Outcomes



Steps

- Digital Plans?
- When are we turning off the paper plans?
- Do we need a government mandate?

