



HARRIS GEOSPATIAL SOLUTIONS

GEOBUIZ SUMMIT: INNOVATIONS & SOCIO ECONOMIC BENEFITS

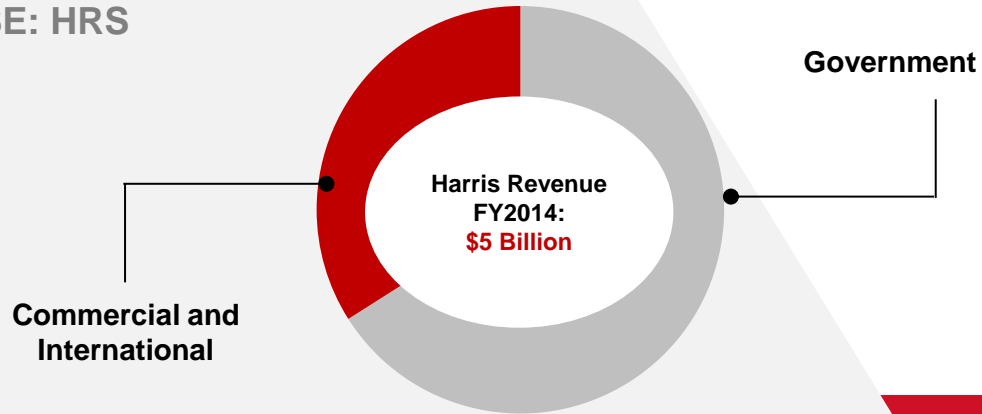
STUART BLUNDELL

[HARRIS.COM](https://www.harris.com) | [#HARRISCORP](https://twitter.com/HARRISCORP)

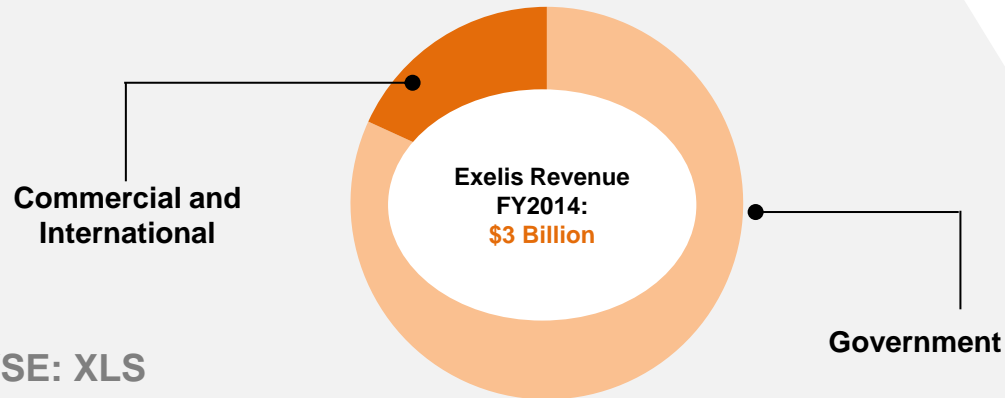
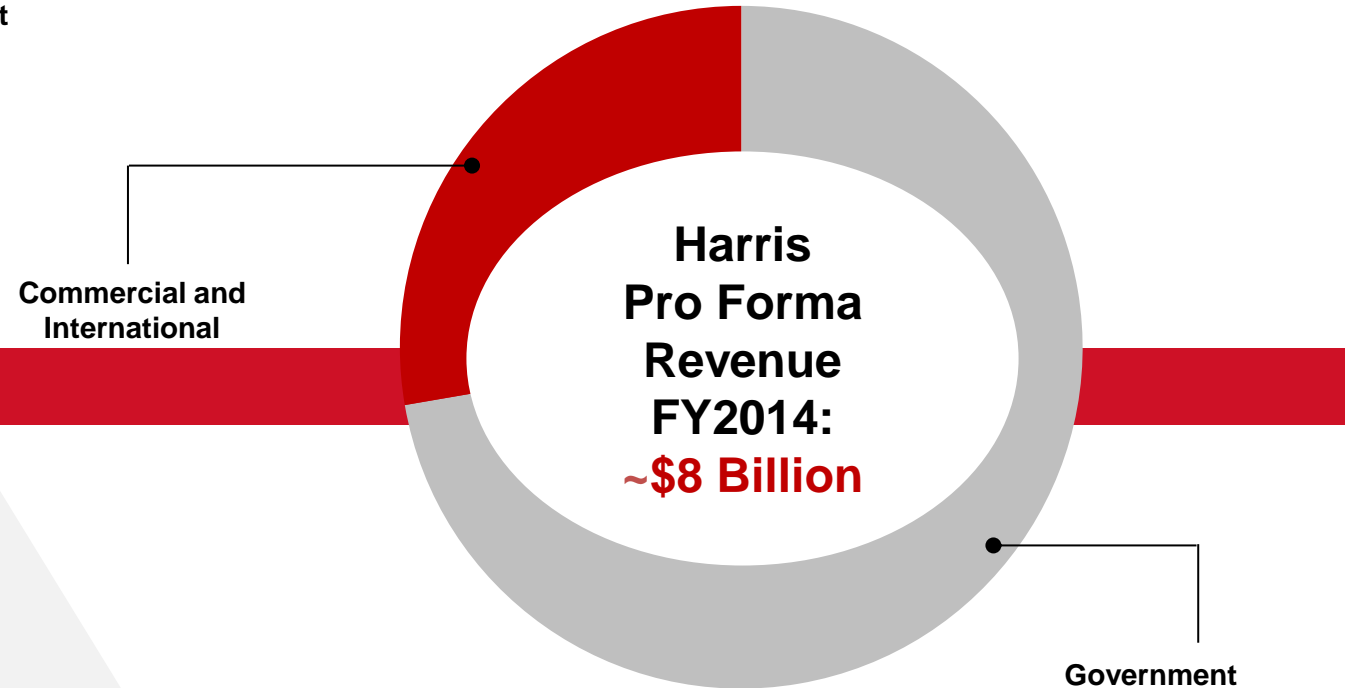
HARRIS[®] TECHNOLOGY TO CONNECT,
INFORM AND PROTECT[™]

Company Information

NYSE: HRS



NYSE: HRS



NYSE: XLS

- Advanced, technology-based solutions for government and commercial customers
- 23,000 employees
- 9,000 scientists and engineers
- Customers in 125 countries

- Harris Geospatial is a global company with 120 years of experience in communications, sensors, space science and geospatial technology:
 - Global Climate Change, Food, Energy and Water Security – Harris Environmental Solutions
 - Geospatial Technology and the Future of the City – Harris 3D Models from LIDAR and Imagery
 - Global National Security – Harris Geospatial, Communications and System Integration Services
 - Critical Infrastructure, Environmental Change, Urban Planning – Harris Environmental & Geospatial Solutions
 - Access to Timely and Relevant Geospatial Data is Key to Success – Harris as a Data Partner

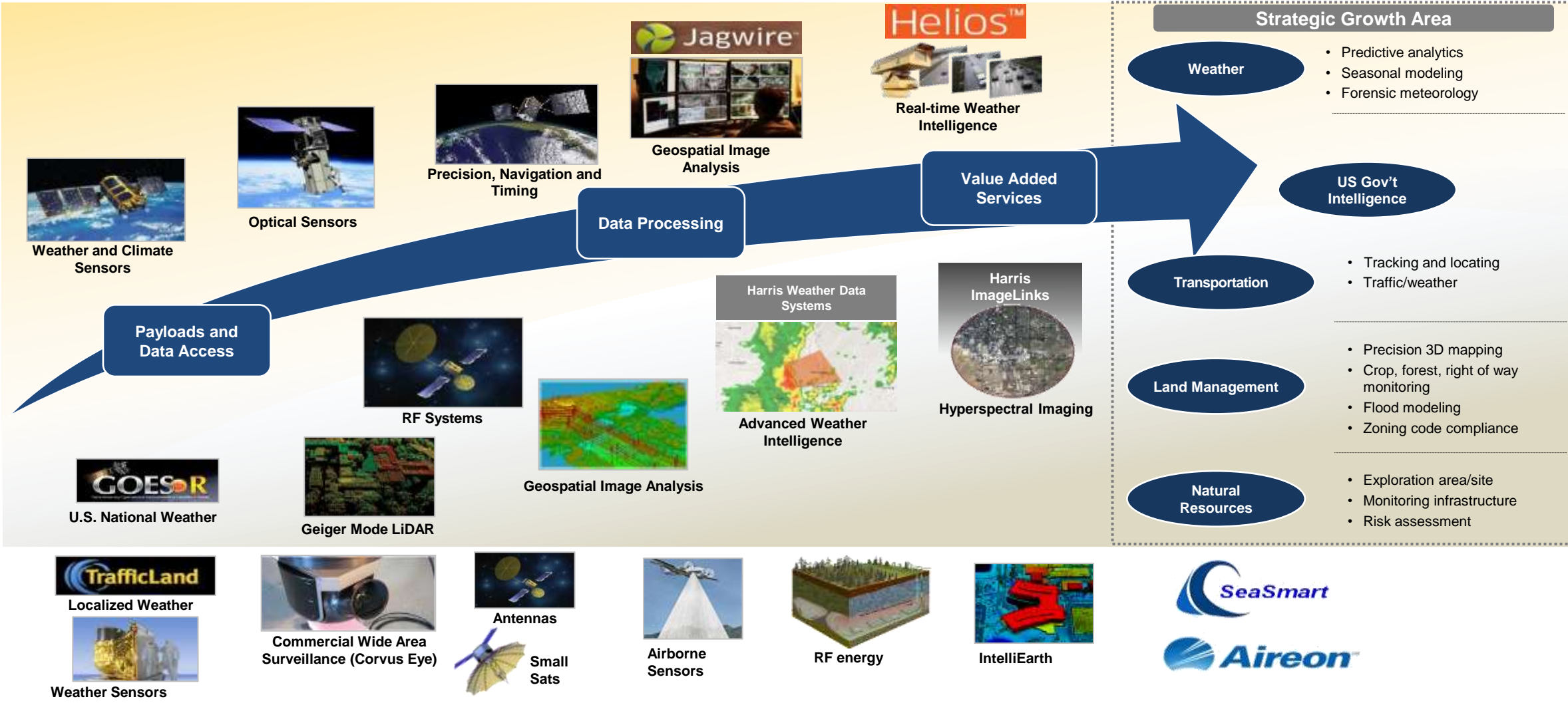
Expanding Our Value



SENSORS

PROCESSING

INFORMATION

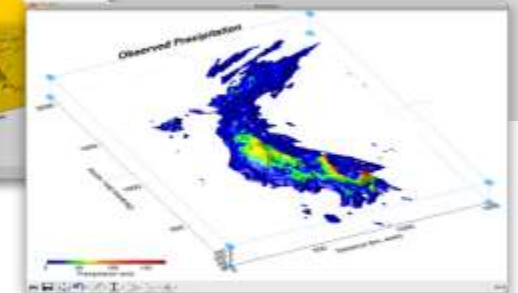
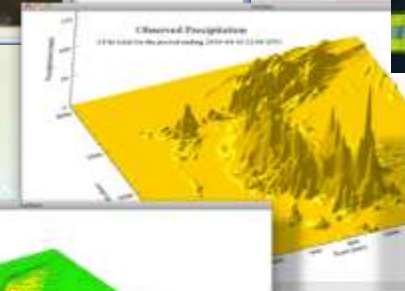
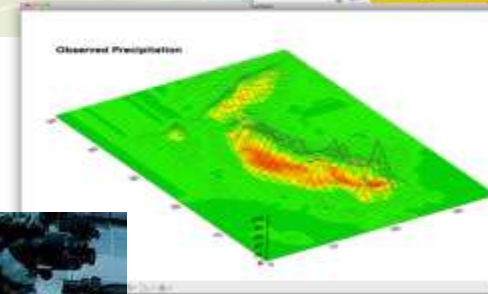
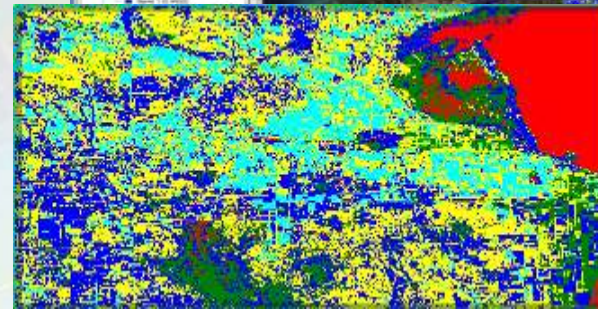
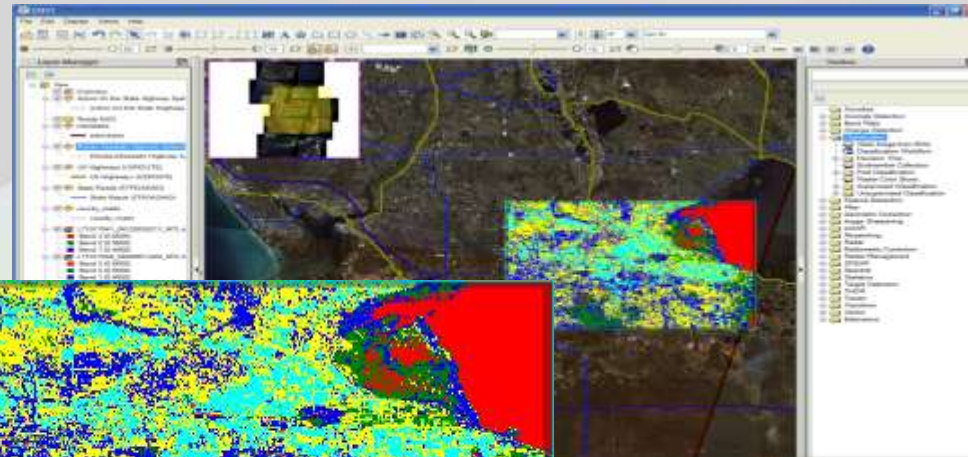


Value-Added Solutions from Harris Geospatial

Information to Insights for People

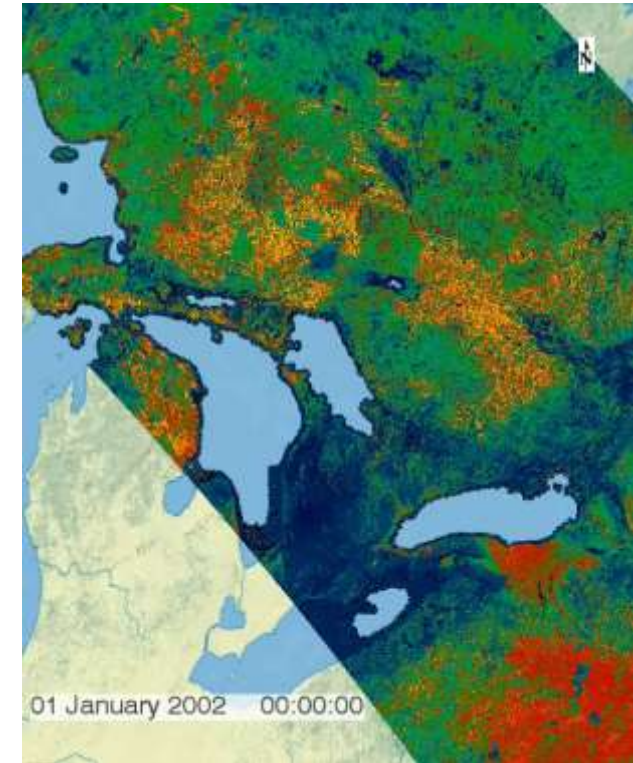
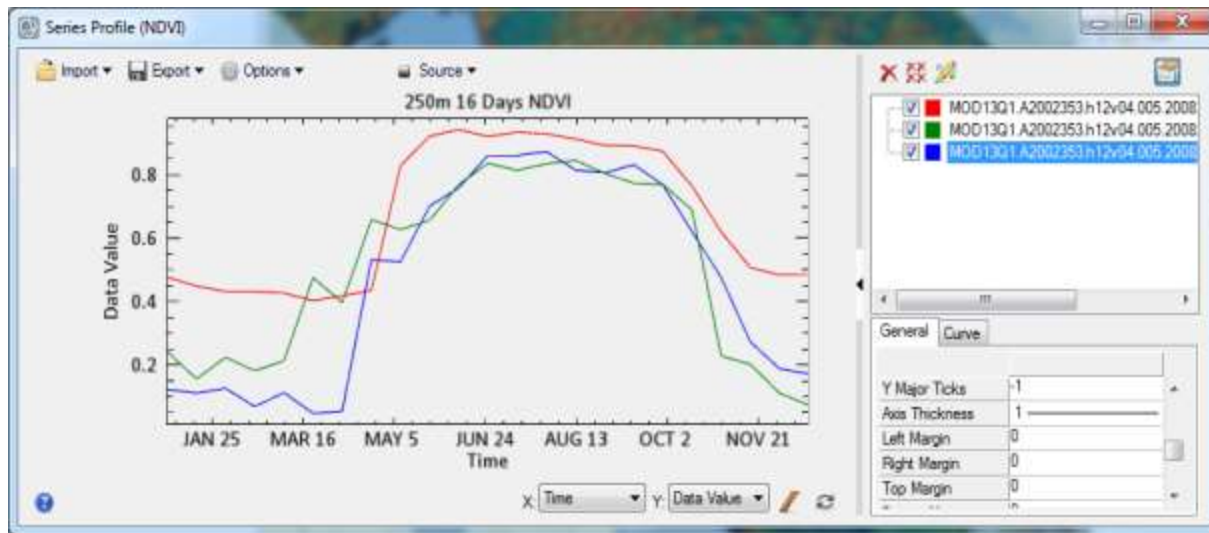
DISCOVER THE INFORMATION IN YOUR REMOTE SENSING DATA

- > Mission Focused Solutions
- > Tailored Information Products for Customer Needs
- > Integration with Enterprise BI Systems
- > Selected Partnerships with Data Providers and Domain Experts
- > Visualization in ArcGIS



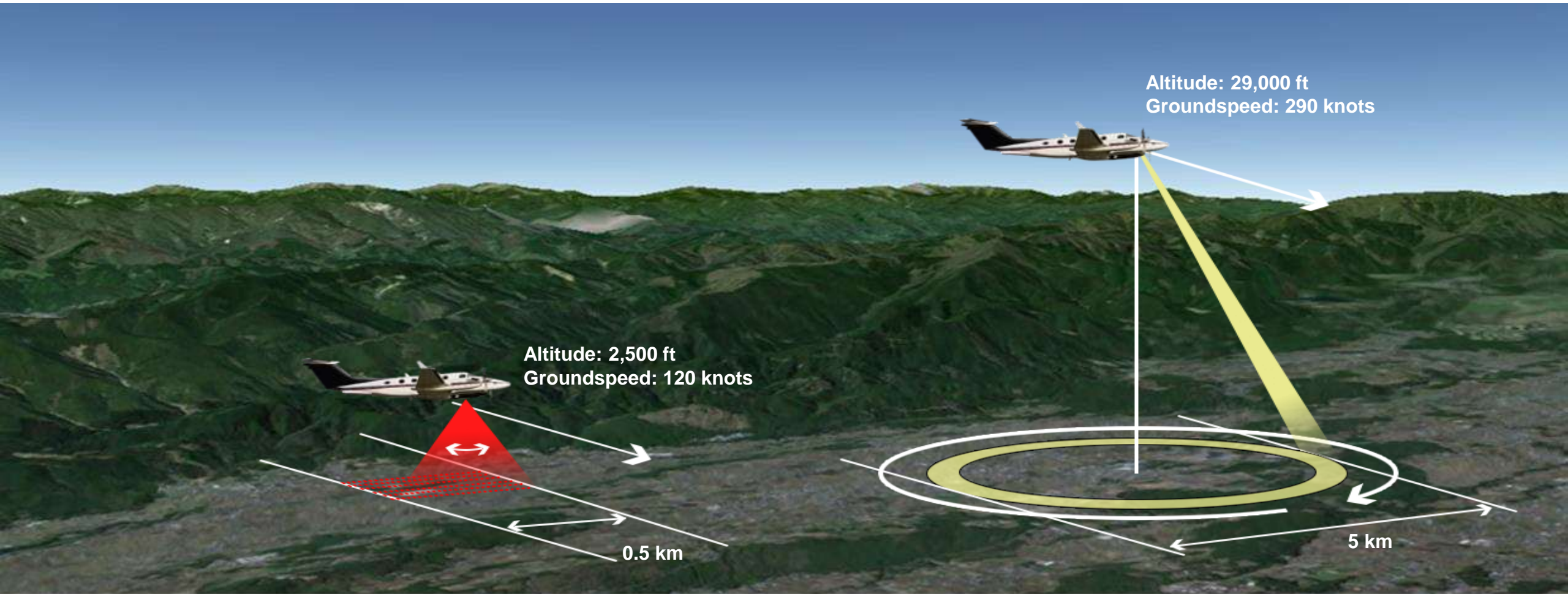
Five dimensions of data: X, Y, Z, Time, Parameter

- Spectral change detection
- Magnitude, rate, and frequency of change
- Filtering, interpolation, and correlation



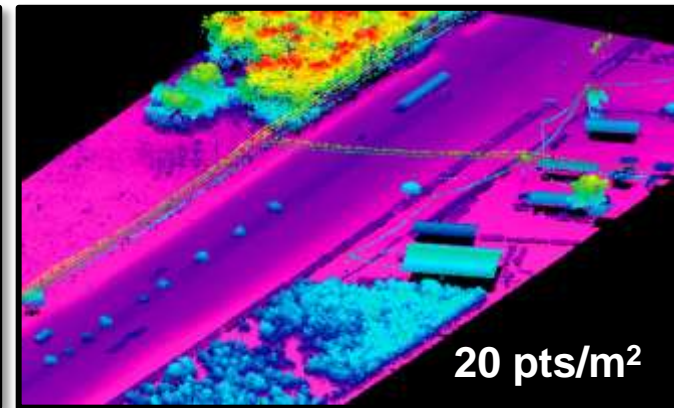
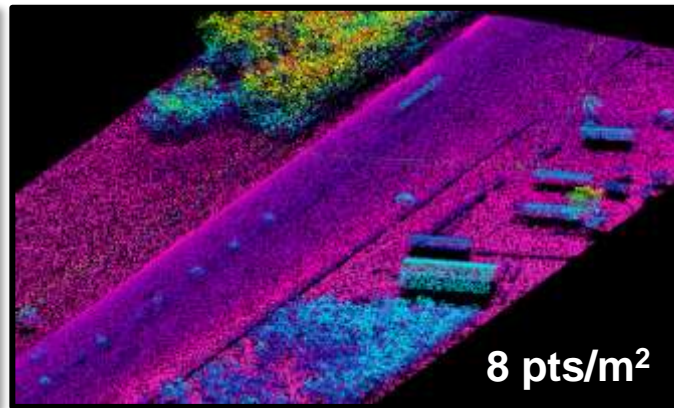
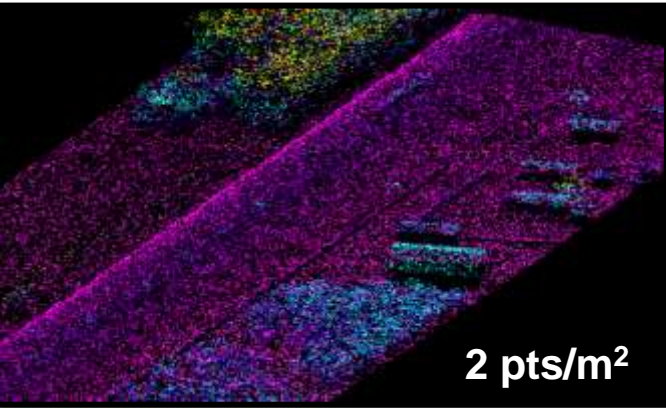
MODIS 16-Day NDVI Composite

Geiger-Mode LIDAR for Wide-area 3D Mapping



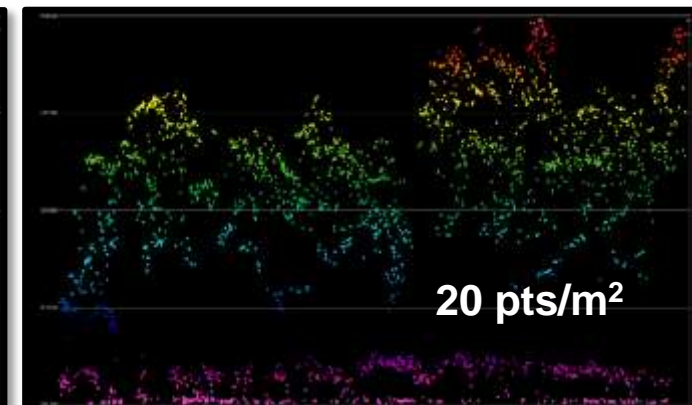
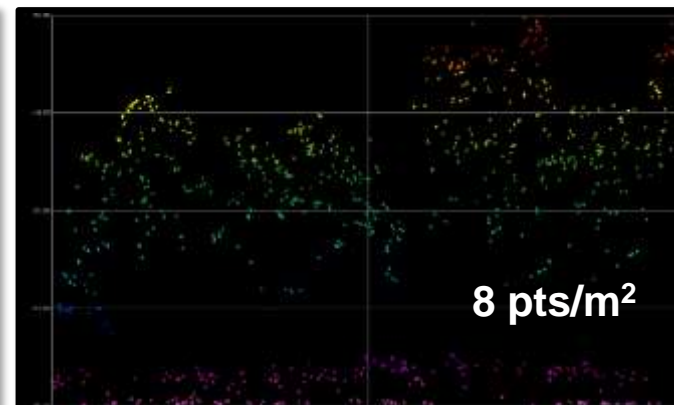
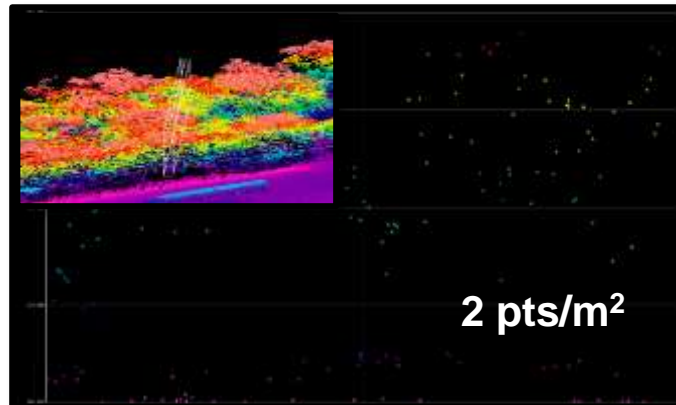
Geiger-mode collects a far larger swath than linear mode LiDAR

Why do higher densities matter?



Infrastructure details better defined

Improves foliage penetration to better sample bare earth



Improves accuracy and enables a high level of automation

Harris Satellite Automated Identification System (AIS)

